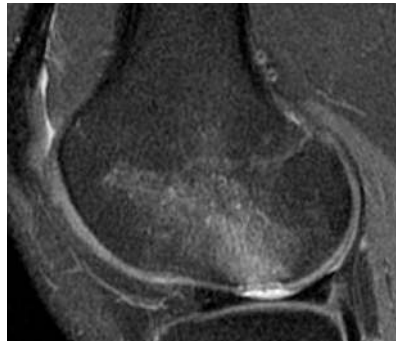


The KneeBar[®] Procedure

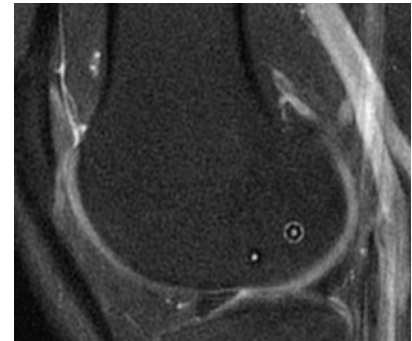
Tired of trying solutions that don't deliver?
This is what healing looks like.

Femoral Condyle
Insufficiency
Fracture Repair

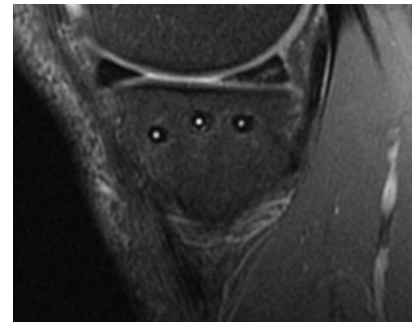
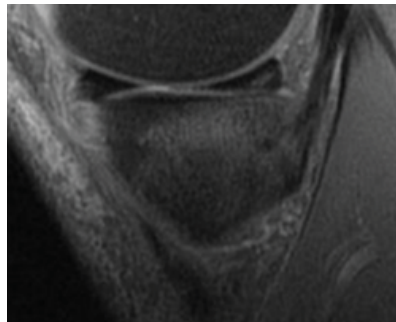
Pre-Op MRI



6 Months Post-Op MRI



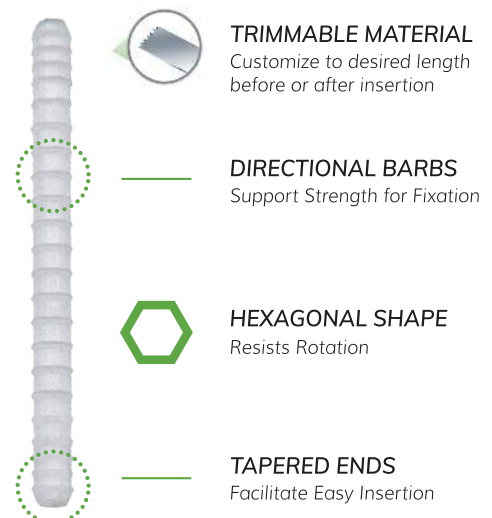
Tibial Insufficiency
Fracture Repair



How it works: Structural Support Meets True Healing

The KneeBar[®] Procedure uses **OSSIOfiber[®] Cannulated Trimmable Fixation Nails (CTFN)** to provide regional mechanical stability and enables biologic healing. The implants support the subchondral bone while gradually integrating, restoring strength and enabling true structural repair.

Immediate load bearing.
Long-term Stability and Healing.



Driving Better Patient Outcomes

This approach delivers real results for patients with subchondral insufficiency fractures.



Clinical results speak for themselves.

In a study led by **Brian Cole, MD**, patients treated with bio-integrative fixation nail rafting with the OSSIOfiber® CTFN saw consistent improvements in pain and function at 6 and 12 months, reflected in meaningful gains in both KOOS and IKDC scores¹.

Implant Size Recommendation

Femoral Condyle Insufficiency Fracture Repair

Utilize the 4.0 x 70mm Cannulated Trimmable Fixation Nail

OF2054070S - OSSIOfiber® Cannulated Trimmable Fixation Nail System 4.0 x 70mm

Tibial Insufficiency Fracture Repair

Utilize the 4.0 x 100mm Cannulated Trimmable Fixation Nail

OF2054100S - OSSIOfiber® Cannulated Trimmable Fixation Nail System 4.0 x 100mm

OF1054100S - OSSIOfiber® Cannulated Trimmable Fixation Nail Implant 4.0 x 100mm

Indications

The OSSIOfiber® Trimmable Fixation Nails are indicated for maintenance of alignment and fixation of bone fractures, osteotomies, arthrodesis and bone grafts in the presence of appropriate additional immobilization (e.g. rigid fixation implants, cast, brace) in adults and children (2-12 years) and adolescents (12-21 years) in which growth plates have fused or in which growth plates will not be crossed by fixation.

¹Data on file

